

# MAYBERRY VILLAS



## *The Cambridge*

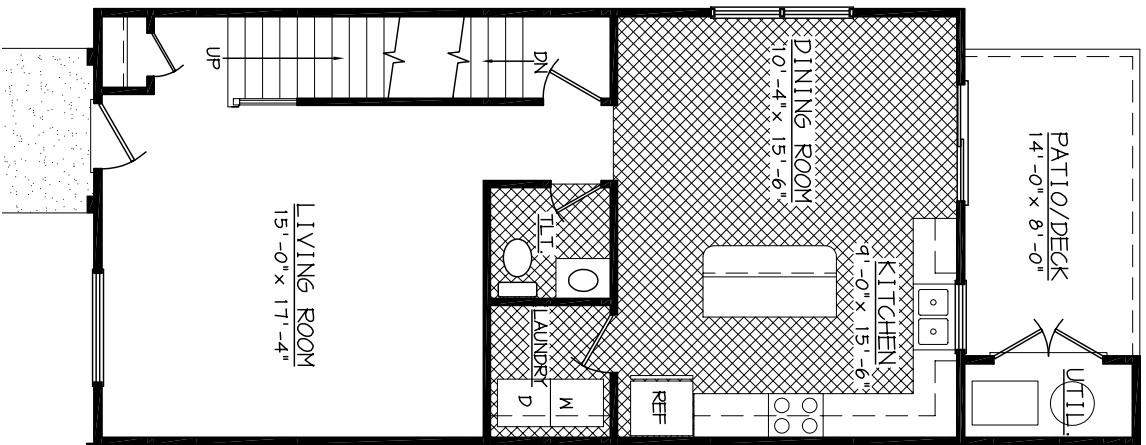
Mayberry Hills, Smith Mountain Lake's only Traditional Neighborhood Development, offers a variety of classic and spacious, two-floor townhouses. Each home is within easy walking distance of all shopping and dining in Downtown Moneta. With Smith Mountain Lake just a few minutes away, Mayberry Hills is the perfect place to call home.

- *Large master suite with closet*
- *Laundry on main level*
- *Large kitchen area*
- *Natural light invited indoors with many windows*
- *Bedrooms: 2*
- *Bathrooms: 2.5*

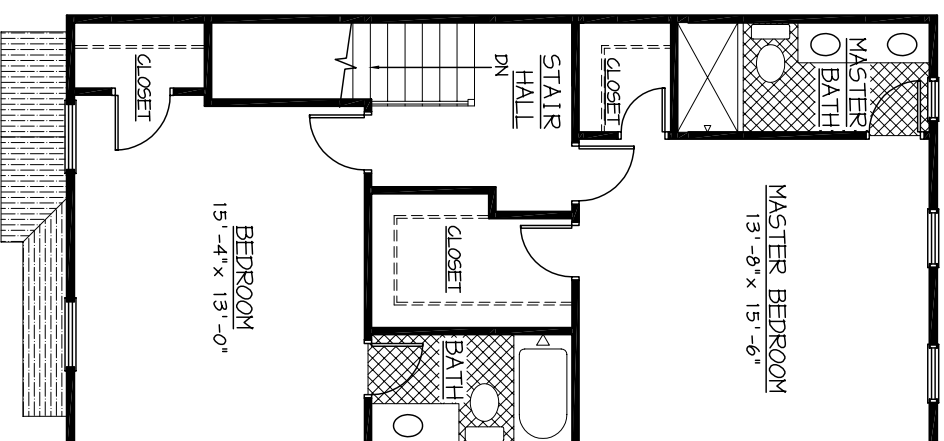


For more information, contact Lyons Team Realtors at 1800-920-0801 or visit our website at [www.DowntownMoneta.com](http://www.DowntownMoneta.com)

# THE CAMBRIDGE



FIRST FLOOR PLAN



SECOND FLOOR PLAN

Floor plans and renderings are artist conceptions that may vary in detail from the actual homes. All room dimensions are approximate. We reserve the right to alter home specifications without notice or obligation. (306)

