

THE CHARLESTON



The Charleston

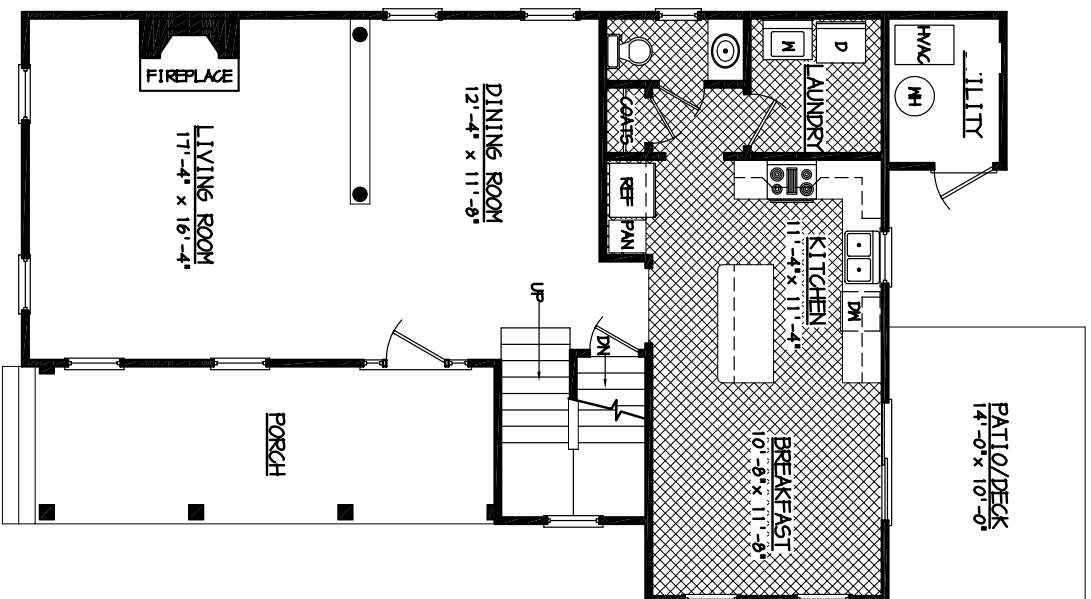
Mayberry Hills, Smith Mountain Lake's only Traditional Neighborhood Development, offers a variety of classic Single-family homes. Each home is within easy walking distance of all shopping and dining in Downtown Moneta. With Smith Mountain Lake just a few minutes away, Mayberry Hills is the perfect place to call home.

- *Large eat-in kitchen with island*
- *Cathedral ceiling in master suite*
- *Walk-in laundry on main-level*
- *Walk-in closet in master suite*
- *Electric fireplace*
- *Covered balcony off master suite*
- *Bedrooms: 3*
- *Bathrooms: 2.5*

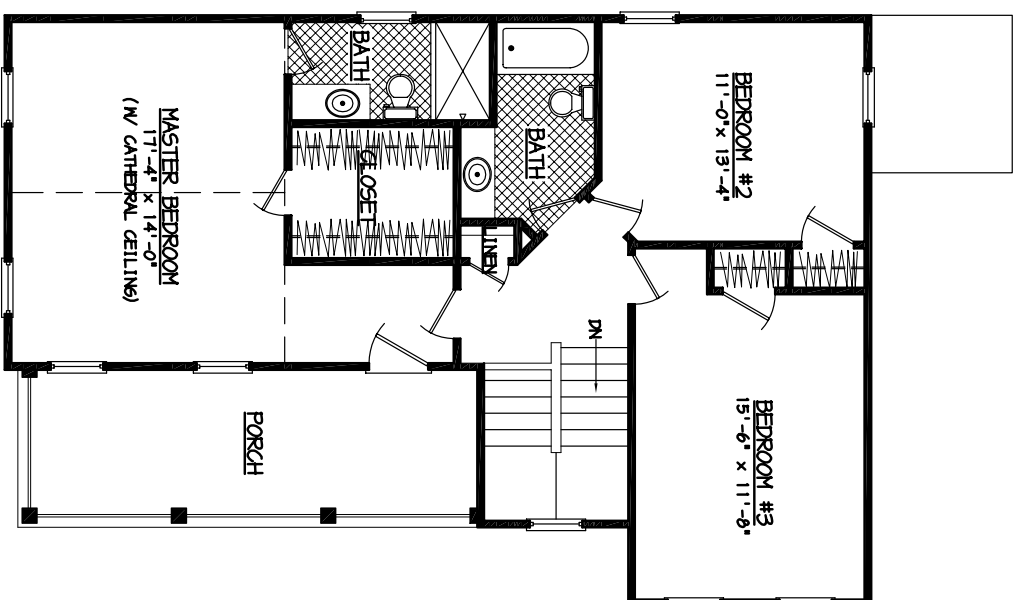


For more information, contact Lyons Team Realtors at 1800-920-0801 or visit our website at www.DowntownMoneta.com

THE CHARLESTON



FIRST FLOOR PLAN



SECOND FLOOR PLAN

Floor plans and renderings are artist conceptions that may vary in detail from the actual homes. All room dimensions are approximate. We reserve the right to alter home specifications without notice or obligation. (306)



MAYBERRY HILLS
DOWNTOWN, ALABAMA

